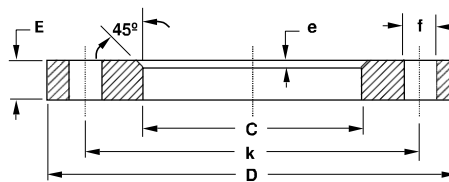
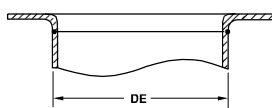


Bridas locas de Aluminio

PN 10



Diámetro Nominal		Tubo	TUBERIA ESPESOR 1 A 3 mm							TUBERIA S/ISO R64			peso aprox. Kg		
			Brida				Agujeros			Peso	Diámetro Nominal			Tubo	Brida
DN	pulg.	DE	ØC	ØD	E	e	ØK	Øf	nr.	Kg.	DN	Pulg.	DE	ØC	
15	1/2"	18-20	24	95	12	4	65	14	4	0,190	15	1/2"	21,3	24	0,190
20	3/4"	23-25	30	105	12	4	75	14	4	0,220	20	3/4"	26,9	30	0,220
25	1"	28-30	34	115	12	4	85	14	4	0,270	25	1"	33,7	36	0,270
32	1 1/4"	35-38	40	140	16	4	100	18	4	0,540	32	1 1/4"	42,2	46	0,530
40	1 1/2"	43-44,5	48	150	16	4	110	18	4	0,610	40	1 1/2"	48,3	54	0,590
50	2"	50,8-53	58	165	16	4	125	18	4	0,730	50	2"	60,3-63,5	65	0,700
65	2 1/2"	73	77	185	16	4	145	18	4	0,900	65	2 1/2"	76,1	81	0,870
80	3"	84-86	90	200	18	5	160	18	8	1,080	80	3"	88,9	94	1,050
100	4"	104-106	110	220	18	5	180	18	8	1,230	100	4"	114,3	119	1,160
125	5"	129-131	135	250	18	5	210	18	8	1,520	125	5"	139,7	144	1,450
150	6"	154-156	160	285	18	5	240	22	8	1,900	150	6"	168,3	173	1,700
200	8"	204-206	212	340	20	5	295	22	8	2,710	200	8"	219,1	225	2,500
250	10"	254-256	262	395	22	5	350	22	12	3,700	250	10"	273	279	3,250
300	12"	304-306	312	445	22	5	400	22	12	4,250	300	12"	323,9	329	3,800
350	14"	354	362	505	22	5	460	22	16	5,250	350	14"	355,6	362	5,250
400	16"	406	413	565	25	6	515	25	16	7,200	400	16"	406,4	413	7,200
450	18"	456	466	615	25	6	565	25	20	7,600	450	18"	457,2	467	7,600
500	20"	506	517	670	28	6	620	25	20	9,600	500	20"	508	517	9,600
600	24"	606	620	780	30	6	725	30	20	12,750	600	24"	610	620	12,750
700	28"	706	721	895	32	6	840	30	24	17,000	700	28"	711	721	17,100
800	32"	806	824	1015	36	7	950	33	24	25,600	800	32"	813	824	25,600

Dimensiones en mm.