

MACHOS Y COJINETES



EGA Master ha desarrollado una nueva gama de útiles de roscado (machos y cojinetes) que ofrecen una solución idónea en las tareas de reparación y mantenimiento industrial.



1. Su geometría asegura la calidad de las roscas obtenidas y mejora la extracción de la viruta.

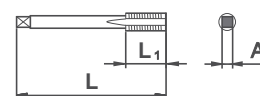
2. Fabricados en acero rápido: HSS-M2 o HSS-Co favoreciendo la duración de la herramienta y minimizando los tiempos de operación necesarios.

3. EGA Master incluye todas las roscas de uso común en la industria:

- Rosca métrica, paso normal y fino
- Rosca BSW
- Roscas UNC y UNF
- Rosca GAS (BSP)

SET DE 3 MACHOS DE ROSCAR MÉTRICA

COD	METRIC	A	L1 (mm)	L (mm)	gr.		
57700	2 x 0,4	2,0	8,0	41	15	100	1
57701	3 x 0,5	2,5	11	48			
57702	4 x 0,7	3,15	13	53	25	48	1
57703	5 x 0,8	4,0	16	58	40		
57704	6 x 1	5,0	19	66	50	20	1
57705	7 x 1	4,5	22	72	100		
57706	8 x 1,25	5,0	24	80	140	20	1
57707	9 x 1,25	5,6	25	85	150		
57708	10 X 1,5	6,3	29	89	235	10	1
57709	11 X 1,5		30	95			
57710	12 X 1,75	7,1	32	102	470	5	1
57711	14 X 2	9,0	37	112			
57712	16 X 2	10	38	118	670	3	1
57713	18 X 2,5	11,2	45	130			
57714	20 X 2,5						
57715	22 X 2,5	12,5					
57716	24 X 3	14					



CARACTERÍSTICAS TÉCNICAS

MATERIAL	HSS-M2
----------	--------

SET DE 2 MACHOS DE ROSCAR MÉTRICA

COD	METRIC	A	L1 (mm)	L (mm)	gr.		
57725	6 X 0,75	5,5			30	90	
57726	7 X 0,75	4,5	19	66			
57727	8 X 0,75				35	63	
57728	8 X 1	5,0	22	72			
57729	9 X 0,75		19	66			
57730	9 X 1	5,6	22	72			
57731	10 X 1,25		20	73	55	42	
57732	10 X 1		24				
57733	10 X 1,25	6,3					
57734	11 X 0,75						
57735	11 X 1		22	80			
57736	11 X 1,25				90	30	1
57737	12 X 0,75	7,1					
57738	12 X 1		29	89			
57739	12 X 1,25		22	87			
57740	12 X 1,5		30	95	135	20	
57741	14 X 1	9,0					
57742	14 X 1,25		22	92			
57743	14 X 1,5		32	102	150		
57744	16 X 1	10					
57745	16 X 1,5		37	112	250	10	
57746	18 X 1,5	11,2					
57747	18 X 2		38	108	270		
57748	20 X 1,5		45	130	400	5	
57749	22 X 1,5	12,5					
57750	24 X 2	14					



ISO 529

CARACTERÍSTICAS TÉCNICAS

MATERIAL	HSS-Co
----------	--------

SET DE 3 MACHOS DE ROSCAR BSW

COD	WITHWORTH	A	L1 (mm)	L (mm)	gr.		
57760	1/8" x 40	2,7	12	40	15	100	
57761	5/32" x 32	3,4	14	45			
57762	3/16" x 24	4,3			35		
57763	1/4" x 20		22	56	45	48	
57764	5/16" x 18	4,9			50		
57765	3/8" x 16	5,5	25	70	75		
57766	7/16" x 14	6,2			120		1
57767	1/2" x 12	7	30	75	135	20	
57768	9/16" x 12				190		
57769	5/8" x 11	9	32	80	220	10	
57770	3/4" x 10	11			500	5	
57771	7/8" x 9	14,5	40	100	670		
57772	1" x 8	16	50	110	725	3	



DIN 352

CARACTERÍSTICAS TÉCNICAS

MATERIAL	HSS-M2
----------	--------

SET DE 3 MACHOS DE ROSCAR UNC

COD	UNC	A	L1 (mm)	L (mm)	gr.		
57780	Nº 2 x 56	2,1	11	36	15	100	1
57781	Nº 3 x 48						
57782	Nº 4 x 40	2,7	12	40			
57783	Nº 5 x 40	3,0	14	45	35	48	1
57784	Nº 6 x 32	3,4					
57785	Nº 8 x 32	4,9	16	48			
57786	Nº 10 x 24			18	50		
57787	Nº 12 x 24			22	56	45	
57788	1/4" x 20	5,5	25	63	50		
57789	5/16" x 18						
57790	3/8" x 16	6,2	28	70	75		
57791	7/16" x 14	7,0	30	75	115		
57792	1/2" x 13	9,0	32	80	135	20	
57793	9/16" x 12					190	
57794	5/8" x 11	11	36	90	220	10	
57795	3/4" x 10			40	95	500	5
57796	7/8" x 9	14,5	45	110	335		
57797	1" x 8	16	50	110	360	6	



DIN 352 ANSI B1.1

CARACTERÍSTICAS TÉCNICAS

MATERIAL	HSS-M2
----------	--------

SET DE 3 MACHOS DE ROSCAR UNF

COD	UNF	A	L1 (mm)	L (mm)	gr.				
57800	Nº 2 x 64	2,1	10	32	30	90	1		
57801	Nº 3 x 56								
57802	Nº 4 x 48	2,7	12	40					
57803	Nº 5 x 44	3,0							
57804	Nº 6 x 40	3,4	14	45	35	63	1		
57805	Nº 8 x 36								
57806	Nº 10 x 32								
57807	Nº 12 x 28	4,9	16	50					
57808	1/4" x 28								
57809	5/16" x 24	5,5	18	56	90	30			
57810	3/8" x 24								
57811	7/16" x 20	6,2	20	63	135	20			
57812	1/2" x 20	7,0				150			
57813	9/16" x 18	9,0	22	70	250	10			
57814	5/8" x 18						270		
57815	3/4" x 16	11	22	80	400	5			
57816	7/8" x 14	14,5							
57817	1" x 12	16	90	110					



DIN 2181 ANSI B1.1

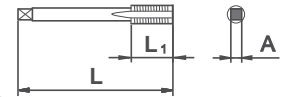
CARACTERÍSTICAS TÉCNICAS

MATERIAL	HSS-M2
-----------------	--------

SET DE 2 MACHOS DE ROSCAR GAS (BSP)

COD	GAS (BSP)	A	L1 (mm)	L (mm)	gr.		
57820	1/8" x 28	5,5	20	60	75	16	1
57821	1/4" x 19	9,0		70	95		
57822	3/8" x 19		12	22	80	265	7
57823	1/2" x 14	90			475		
57824	3/4" x 14	16	25	100	835	4	
57825	1" x 11	20					

DIN 5157



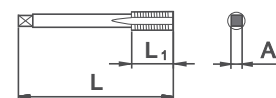
CARACTERÍSTICAS TÉCNICAS

MATERIAL	HSS-M2
-----------------	--------

MACHOS DE ROSCAR NPT

COD	NPT	A	L1 (mm)	L (mm)	gr.		
57751	1/8" x 27	8	19	54	25	60	1
57752	1/4" x 18	11	27	62	35		
57753	3/8" x 18	13	35	65	65	15	
57754	1/2" x 14			80	135		
57755	3/4" x 14	17	44	83	230	8	1
57756	1" x 11.1/2"	21		95	420		
57757	1.1/4" x 11.1/2"	24	33	125	750	4	
57758	1.1/2" x 11.1/5"	29		140	1000		
57759	2" x 11.1/5"	35		160	1100	1	

DIN 233

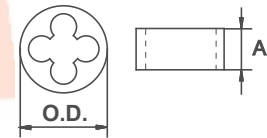


CARACTERÍSTICAS TÉCNICAS

MATERIAL	HSS-M2
-----------------	--------

COJINETES ROSCA MÉTRICA

COD	METRIC	A	O.D. mm	gr.		
57845	2 x 0,4		16	15		
57846	3 x 0,5	5		20		
57847	4 x 0,7		20			
57848	5 x 0,8	7		25		
57849	6 x 1				105	
57850	7 x 1					
57851	8 x 1,25	9	25	30		
57852	9 x 1,25					
57853	10 x 1,5					
57854	11 x 1,5	11	30	55		
57856	12 x 1,75	14	38	85		
57858	14 x 2					
57859	16 x 2				30	
57860	18 x 2,5	18	45	180		
57861	20 x 2,5					
57864	22 x 2,5	22	55	220	11	
57865	24 x 3					
57866	6 x 0,75	7	20	25		
57867	7 x 0,75					
57868	8 x 0,75					
57869	8 x 1	9	25	30		1
57870	9 x 0,75					
57871	9 x 1					
57872	10 x 0,75					
57873	10 x 1					
57874	10 x 1,25	11	30	55		
57875	11 x 0,75					
57876	11 x 1				30	
57879	12 x 1					
57880	12 x 1,25					
57881	12 x 1,5	10	38	75		
57882	14 x 1					
57883	14 x 1,25					
57884	14 x 1,5					
57885	16 x 1					
57886	16 x 1,5					
57887	18 x 1,5	14	45	150		
57889	18 x 2					
57890	20 x 1,5					
57891	22 x 1,5				11	
57892	24 x 1,5	16	55	200		
57893	24 x 2					



DIN 223 EN 22568

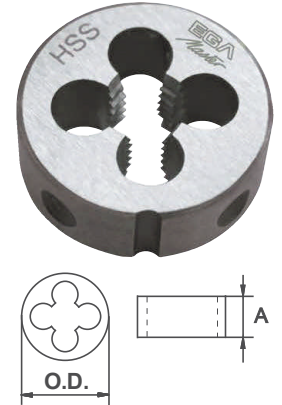
CARACTERÍSTICAS TÉCNICAS

MATERIAL	HSS-M2
----------	--------

COJINETES ROSCA BSW

COD	WITHWORTH	A	O.D. mm	gr.		
57900	BSW 1/8" x 40	5		20		
57901	BSW 5/32" x 32		20			
57902	BSW 3/16" x 24	7		25	105	
57903	BSW 1/4" x 20					
57904	BSW 5/16" x 18	9	25	30		
57905	BSW 3/8" x 16	11	30	55		1
57906	BSW 7/16" x 14				30	
57907	BSW 1/2" x 12	14	38	85		
57908	BSW 9/16" x 12					
57909	BSW 5/8" x 11	18	45	180		
57910	BSW 3/4" x 10				11	
57911	BSW 7/8" x 9	22	55	220		
57912	BSW 1" x 8					

DIN 223 EN 22568



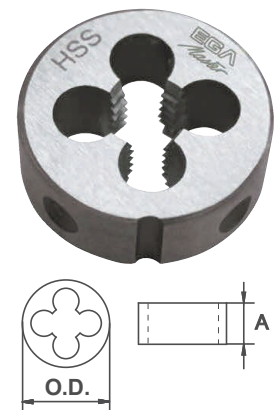
CARACTERÍSTICAS TÉCNICAS

MATERIAL	HSS-M2
-----------------	--------

COJINETES ROSCA UNC

COD	UNC	A	O.D. mm	gr.		
57920	Nº 2 x 56		16	15		
57921	Nº 3 x 48					
57922	Nº 4 x 40	5		20	216	
57923	Nº 5 x 40					
57924	Nº 6 x 32		20			
57925	Nº 8 x 32					
57926	Nº 10 x 24					
57927	Nº 12 x 24	7		25		1
57928	1/4" x 20					
57929	5/16" x 18	9	25	30	105	
57930	3/8" x 16	11	30	55		
57931	7/16" x 14				30	
57932	1/2" x 13	14	38	85		
57933	9/16" x 12					
57934	5/8" x 11	18	45	180		
57935	3/4" x 10				11	
57936	7/8" x 9	22	55	220		
57937	1" x 8					

DIN 223 EN 22568

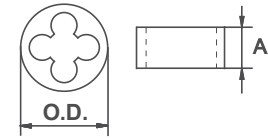


CARACTERÍSTICAS TÉCNICAS

MATERIAL	HSS-M2
-----------------	--------

COJINETES ROSCA UNF

COD	UNF	A	O.D. mm	gr.		
57940	Nº 2 x 64		16	15		
57941	Nº 3 x 56					
57942	Nº 4 x 48	5		20		
57943	Nº 5 x 44				216	
57944	Nº 6 x 40		20			
57945	Nº 8 x 36					
57946	Nº 10 x 32	7		25		
57947	Nº 12 x 28					
57948	1/4" x 28					
57949	5/16" x 24	9	25	30	105	1
57950	3/8" x 24	11	30	55		
57951	7/16" x 20				30	
57952	1/2" x 20	14	38	85		
57953	9/16" x 18					
57954	5/8" x 18	18	45	180		
57955	3/4" x 16					
57956	7/8" x 14	22	55	220	11	
57957	1" x 12					



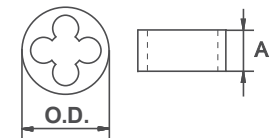
DIN 223 EN 22568

CARACTERÍSTICAS TÉCNICAS

MATERIAL	HSS-M2
-----------------	--------

COJINETES ROSCA GAS (BSP)

COD	GAS (BSP)	A	O.D. mm	gr.		
57960	1/8" x 28	11	30	55		
57961	1/4" x 19	10	38	75	30	
57962	3/8" x 19					1
57963	1/2" x 14	14	45	150		
57964	3/4" x 14	16	55	200	11	
57965	1" x 11	18	65	275		



DIN 5158

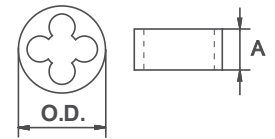
CARACTERÍSTICAS TÉCNICAS

MATERIAL	HSS-M2
-----------------	--------

COJINETES ROSCA NPT

COD	NPT	A	O.D. mm	gr.		
57897	1/8"	10	38	75		
57898	1/4"	15		90	20	
57913	3/8"		45	160		
57914	1/2"	20		175		
57915	3/4"	22	55	220	8	1
57916	1"	25	65	325		
57917	1.1/4"		75	400	4	
57918	1.1/2"	26	90	550		
57919	2"		105	650	1	

DIN 233

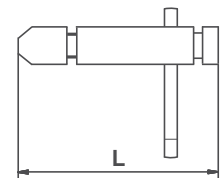


CARACTERÍSTICAS TÉCNICAS

MATERIAL	HSS-M2
-----------------	--------

GIRAMACHOS DE CARRACA REVERSIBLE






COD	NPT	WITHWORTH	GAS (BSP)	L (mm)	gr.		
57830	M3-M10	1/8"-3/8"	-	85	190	20	
57831	M5-M12	7/32"-1/2"	1/8"	100	290	14	1
57832	M3-M10	1/8"-3/8"	-	250	250	10	
57833	M5-M12	7/32"-1/2"	1/8"	300	445		

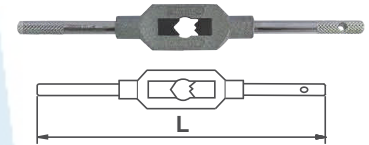


CARACTERÍSTICAS TÉCNICAS

MATERIAL	Acero
-----------------	-------

GIRAMACHOS AJUSTABLE

COD	 NPT	 WITHWORTH	 GAS (BSP)	L (mm)	gr.		
57835	M1-M8	1/16"-5/16"	-	125	55	20	
57836	M3-M10	1/8"-3/8"	-	180	105	12	
57837	M3-M12	1/8"-1/2"	1/8"	200	160	10	
57838	M4-M12	3/16"-5/8"	1/8"-3/8"	280	300	6	1
57839	M5-M20	1/4"-3/4"	1/8"-1/2"	375	670	6	
57840	M10-M27	1/2"-1"	1/8"-3/4"	500	875	4	
57841	M14-M33	5/8"-1.1/4"	1/4"-1"	750	875	4	








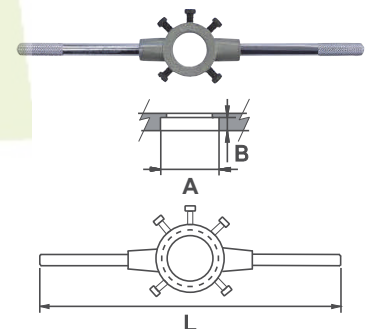
DIN 1814

CARACTERÍSTICAS TÉCNICAS

MATERIAL	Acero + Zamak
----------	---------------

PORTACOJINETES

COD	 NPT	 WITHWORTH	 GAS (BSP)	A	B	L (mm)	gr.		
57970	M1-M2,6	1/16"-3/32"	-	16	5	160	50	20	
57971	M3-M4	1/8"-5/32"	-	20	7	200	85	12	
57972	M4,5-M6	3/16"-1/4"	-	25	9	225	115	6	
57973	M7-M9	5/16"	1/16"	30	11	280	220	6	
57974	M10-M11	3/8"-7/16"	1/8"	38	10	315	325	4	
57975	MF12-MF14	-	1/4"	45	14	450	415	2	1
57976	M12-M14	1/2"-9/16"	-	55	16	560	500	2	
57977	MF16-MF20	-	3/8"-1/2"	65	18	630	600	1	
57978	M16-M20	5/8"-3/4"	-	75	25	800	725	1	
57979	MF21-MF26	-	5/8"-3/4"	90	36	900	800	1	
57980	M22-M24	7/8"-1"	-	105	22	1000	850		
57981	MF27-MF36	-	7/8"-1"						
57966	M27-M36	1.1/8"-1.3/8"							
57967	M39-M42	1.1/2"-1.5/8"							
57968	M45-M52	1.3/4"-2"							
57969	M55-M62	-	1.3/4"-2"						








DIN 225 ISO 22568

CARACTERÍSTICAS TÉCNICAS

MATERIAL	Acero + Zamak
----------	---------------

KITS DE ROSCADO

COD		COD. PCS.		COD. PCS.		COD. PCS.		COD. PCS.	
57690			-		-		-		-
57691	M3-M4-M5-M6-M8-M10-M12	57701 57702 57703 57704 57706 57708 57710	M3-M4-M5-M6-M8-M10-M12	57846 57847 57848, 57849 57851 57853 57854	M3-M12+G	7837	25 x 9	57973	800
57692	M6-M8-M10-M11-M12	57704 57706 57708 57709 57710	M6-M8-M10-M11-M12	57849 57851 57853 57856 57857	M4-M12+G	57838	25 x 9; 30 x 11; 38 x 14	57973 57974 57976	1600
57693	M6-M8-M10-M12-M14-M16-M18	57704 57706 57708 57710 57711 57712 57713	M6-M8-M10-M12-M14-M16-M18	57849 57851 57853 57857 57858 57859 57860	M3-M12 + G M5-M20 + G	57837 57839	25 x 9; 38 x 14; 45 x 18	57973 57976 57978	2000
57694	BSW 1/8", 3/16", 1/4", 5/16", 3/8", 7/16", 1/2"	57760 57762 57763 57764 57765 57766 57767	BSW 1/8", 3/16", 1/4", 5/16", 3/8", 7/16", 1/2"	57900 57902 57903 57904 57905 57906 57907	M3-M10 M4-M12 + G M2-M10 REV.	57836 57838 57830	30 x 11; 38 x 14	57974 57976	5600
57695	UNC 1/4", 5/16", 3/8", 7/16", 1/2", 5/8", 3/4"	57788 57789 57790 57791 57792 57794 57795	UNC 1/4", 5/16", 3/8", 7/16", 1/2", 5/8", 3/4"	57928 57929 57930 57931 57932 57934 57935	M3-M10 M4-M12 + G	57836 57838	20 x 7; 25 x 9; 30 x 11; 38 x 14; 45 x 18	57972 57973 57974 57976 57978	4400
57696	UNF 1/4", 5/16", 3/8", 7/16", 1/2", 5/8", 3/4"	57808 57809 57810 57811 57812 57814 57815	UNF 1/4", 5/16", 3/8", 7/16", 1/2", 5/8", 3/4"	57948 57949 57950 57951 57952 57954 57955	M3-M10 M5-M20 + G	57836 57839	20 x 7; 25 x 9; 30 x 11; 38 x 10; 45 x 14	57972 57973 57974 57975 57977	8000
57697	GAS (BSP) 1/8", 1/4", 3/8", 1/2", 3/4", 1"	57820 57821 57822 57823 57824 57825	GAS (BSP) 1/8", 1/4", 3/8", 1/2", 3/4", 1"	57960 57961 57962 57963 57964 57965	M4-M12 + G M5-M20 + G M13-M32 + G	57838 57839 57841	30 x 11; 38 x 10; 45 x 14; 55 x 16; 65 x 18	57974 57975 57977 57979 57981	14500