

LLAVES DE VASO DE IMPACTO



EGA Master amplía su gama de llaves de vaso de impacto, con las llaves de 4 y 8 cantos en pulgadas, ideales para tuercas y tornillos cuadrados.

Fabricados en cromo-vanadio, están diseñados para soportar altos pares de apriete con mínimo desgaste, proporcionando una mayor durabilidad.

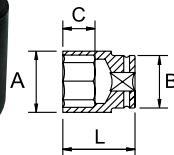
4 y 8 cantos
pulgadas
y milímetros

1. Diseñados para aplicaciones de automoción, industria petroquímica, extractiva y minera.



LLAVES DE VASO DE IMPACTO

1/2"



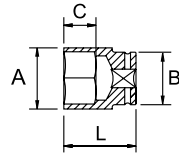
COD	AF	L	A	B	C	MÁXIMO PAR DE APRIETE Nm	gr.		
56350	3/8"	19			6	147,1	70		
56351	7/16"	21	24		8	178	75		
56352	1/2"	24			9	249	80		
56353	9/16"	26	26			288,3	95		
56354	5/8"	28	28	11		500	110		
56355	11/16"	30	30			600	125		
56356	3/4"	34	34	13			180	6	1
56357	13/16"	36	36		15		195		
56358	7/8"	38					220		
56359	15/16"	42	38		18	650	285		
56360	1"	44					300		
56361	1.1/16"	46.5	46,5		19		430		
56362	1.1/8"	49	49				605		



Cr-V

LLAVES DE VASO DE IMPACTO

3/4"

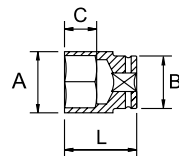
4pt 





COD	AF	L	A	B	C	MÁXIMO PAR DE APRIETE Nm	gr.		
57190	22 mm		44			972	240		
57191	24 mm	50	47	44	24	1085	250	1	1
57192	27 mm		49			1580	270		
57193	30 mm		55			1885	420		

Cr-V

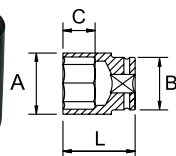
4pt 





COD	AF	L	A	B	C	MÁXIMO PAR DE APRIETE Nm	gr.		
56394	5/8"		32	40	13	500	285		
56395	11/16"	52	34	40	13	600	295	1	1
56396	13/16"		42	42	15	930	380		

Cr-V

8pt 



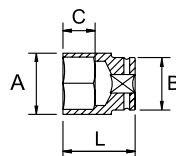
COD	AF	L	A	B	C	MÁXIMO PAR DE APRIETE Nm	gr.		
56363	5/8"		32			500	275		
56364	11/16"		34	40	13	600	280		
56365	3/4"	50	40			650	320		
56366	13/16"		42	42	15	930	360		
56367	7/8"		44			972	395		
56368	15/16"	52	46		18	1085	425		
56369	1"		50			1160	485		
56370	1.1/16"		53		19	1580	555	1	1
56371	1.1/8"	54	56	44	19	1695	585		
56372	1.3/16"		58		21	1885	630		
56373	1.1/4"		61		22	2030	705		
56374	1.5/16"	56	63.5			2225	735		
56375	1.7/16"		68		24	2225	765		
56376	1.1/2"	58	70			2225	860		



Cr-V

LLAVES DE VASO DE IMPACTO

1"

4pt 



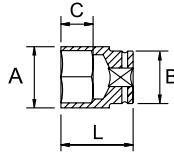
COD	AF	L	A	B	C	MÁXIMO PAR DE APRIETE Nm	gr.		
57194	17mm		40			600	320		
57195	18mm		42			650	340		
57196	20mm			50	24		350		
57197	21mm		44			930	360		
57198	22mm	60				972	370	1	1
57199	23mm		48			1015			
57200	24mm		50	55	27	1085	500		
57201	27mm		55			1695			
57202	30mm		60			2225	550		



Cr-V

LLAVES DE VASO DE IMPACTO

1"

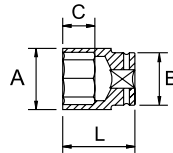
4pt 





COD	AF	L	A	B	C	MÁXIMO PAR DE APRIETE Nm	gr.		
56397	3/4"		43		13	650	575		
56398	13/16"	57	44	52		930	565		
56399	7/8"		48		15	972	675		
56400	15/16"		50		18	1085	685	1	1
56401	1"	60	53	54		1160	715		
56402	1.1/8"		60		19	1955	840		
56403	1.1/2"	75	75		24	2712	1445		-

Cr-V

8pt 



COD	AF	L	A	B	C	MÁXIMO PAR DE APRIETE Nm	gr.		
56377	7/8"		50		15	972	695		
56378	15/16"	60	52		18	1085	700		
56379	1"		54		19	1160	715		
56380	1.1/8"		59	54	21	1955	820		1
56381	1.3/16"		61		22	2225	850		
56382	1.1/4"	62	63			2490	860		
56383	1.5/16"		66		24	2712	905		
56384	1.3/8"	65	68		27	2940	1085		
56385	1.7/16"		71	58	30	3390	1200	1	
56386	1.1/2"	67	73		32	3615	1225		
56387	1.5/8"	70	78		35	2655	1365		
56388	1.11/16"		82		27	2940	1710		
56389	1.3/4"	74	84		30	3390	1720		-
56390	1.13/16"		86		32	3615	1830		
56391	1.7/8"	76	88	62	35	2655	1850		
56392	2"	80	94				2200		
56393	2.3/16"	84	101				2655		

Cr-V

CARACTERÍSTICAS TÉCNICAS

MATERIAL	Cr-V
DUREZA MÍNIMA	44-47 HRc
ACABADO	Fosfatado