

# ACCESORIOS PARA TUBO SANITARIO DIN 11850 (SERIE ANTIGUA)

## FITTINGS AND UNIONS FOR DIN 11850 (OLD SERIES) SANITARY TUBE

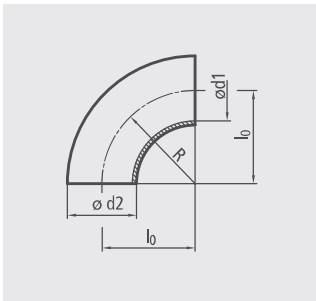
### ACCESSOIRES POUR TUBE SANITAIRE DIN 11850 (ANCIENNE SÉRIE)

4

#### DIN 11850 (OLD SERIES)

CODO 90° SOLDAR  
WELDING BEND 90°  
COUDE 90° A SOUDER

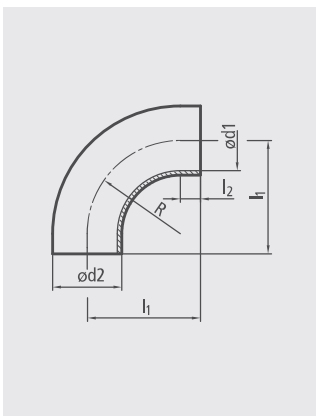
Según DIN 11852 (SERIE ANTIGUA)  
According to DIN 11852 (OLD SERIES)  
Selon DIN 11852 (ANCIENNE SÉRIE)



DN	Ød1	Ød2	l <sub>0</sub>	R	AISI 304	AISI 316L	kg
10	9	12	26	26	T0220-0004010	T0220-0006010	0,015
15	15	18	35	35	T0220-0004015	T0220-0006015	0,030
20	19	22	40	40	T0220-0004020	T0220-0006020	0,045
25	25	28	50	50	T0220-0004025	T0220-0006025	0,070
32	31	34	55	55	T0220-0004032	T0220-0006032	0,090
40	37	40	60	60	T0220-0004040	T0220-0006040	0,125
50	49	52	70	70	T0220-0004050	T0220-0006050	0,200

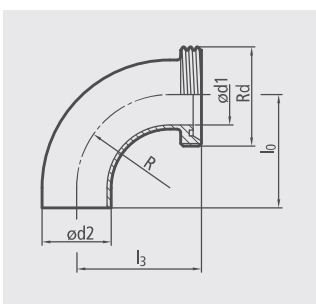
CODO 90° SOLDAR/MANDRINAR  
EXPANDING WELDING BEND 90°  
COUDE 90° A SOUDER/DUDGEONNER

Según DIN 11852 (SERIE ANTIGUA)  
According to DIN 11852 (OLD SERIES)  
Selon DIN 11852 (ANCIENNE SÉRIE)



DN	Ød1	Ød2	l <sub>1</sub>	l <sub>2</sub>	R	AISI 304	AISI 316L	kg
10	9	12	38	12	26	T0222-0004010	T0222-0006010	0,025
15	15	18	47	12	35	T0222-0004015	T0222-0006015	0,050
20	19	22	52	12	40	T0222-0004020	T0222-0006020	0,065
25	25	28	70	20	50	T0222-0004025	T0222-0006025	0,125
32	31	34	78	23	55	T0222-0004032	T0222-0006032	0,150
40	37	40	85	25	60	T0222-0004040	T0222-0006040	0,180
50	49	52	97	27	70	T0222-0004050	T0222-0006050	0,270
65	66	70	110	30	80	T0222-0004065	T0222-0006065	0,570
80	81	85	118	28	90	T0222-0004080	T0222-0006080	0,780
100	100	104	140	40	100	T0222-0004100	T0222-0006100	1,070

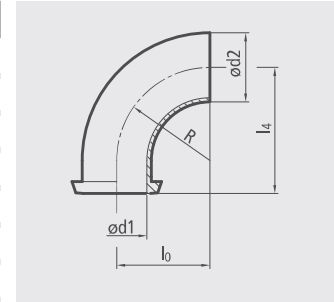
CODO 90° S/M  
BEND 90° W/M  
COUDE 90° S/M



DN	Ød1	Ød2	Rd	l <sub>0</sub>	l <sub>3</sub>	R	AISI 316L	kg
10	9	12	28x1/8"	26	43	26	T0220-0106010	-
15	15	18	34x1/8"	35	52	35	T0220-0106015	-
20	19	22	44x1/6"	40	59	40	T0220-0106020	-
25	25	28	52x1/6"	50	72	50	T0220-0106025	-
32	31	34	58x1/6"	55	77	55	T0220-0106032	-
40	37	40	65x1/6"	60	82	60	T0220-0106040	-
50	49	52	78x1/6"	70	93	70	T0220-0106050	-

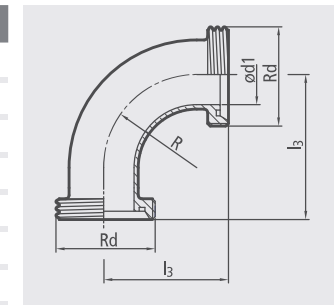
CODO 90° S/T  
BEND 90° W/N  
COUDE 90° S/E

DN	Ød1	Ød2	l <sub>0</sub>	l <sub>4</sub>	R	AISI 316L	kg
10	9	12	26	39	26	T0220-0706010	-
15	15	18	35	48	35	T0220-0706015	-
20	19	22	40	53	40	T0220-0706020	-
25	25	28	50	65	50	T0220-0706025	-
32	31	34	55	70	55	T0220-0706032	-
40	37	40	60	75	60	T0220-0706040	-
50	49	52	70	86	70	T0220-0706050	-



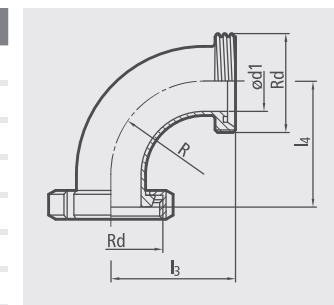
CODO 90° M/M  
BEND 90° M/M  
COUDE 90° M/M

DN	Ød1	Rd	l <sub>3</sub>	R	AISI 316L	kg
10	9	28x1/8"	43	26	T0220-1106010	-
15	15	34x1/8"	52	35	T0220-1106015	-
20	19	44x1/6"	59	40	T0220-1106020	-
25	25	52x1/6"	72	50	T0220-1106025	-
32	31	58x1/6"	77	55	T0220-1106032	-
40	37	65x1/6"	82	60	T0220-1106040	-
50	49	78x1/6"	93	70	T0220-1106050	-

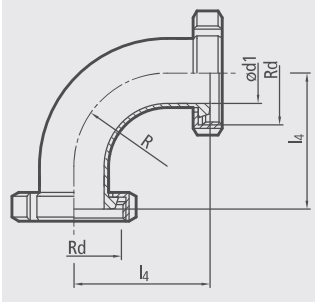


CODO 90° M/T  
BEND 90° M/N  
COUDE 90° M/E

DN	Ød1	Rd	l <sub>3</sub>	l <sub>4</sub>	R	AISI 316L	kg
10	9	28x1/8"	43	39	26	T0220-1306010	-
15	15	34x1/8"	52	48	35	T0220-1306015	-
20	19	44x1/6"	59	53	40	T0220-1306020	-
25	25	52x1/6"	72	65	50	T0220-1306025	-
32	31	58x1/6"	77	70	55	T0220-1306032	-
40	37	65x1/6"	82	75	60	T0220-1306040	-
50	49	78x1/6"	93	86	70	T0220-1306050	-



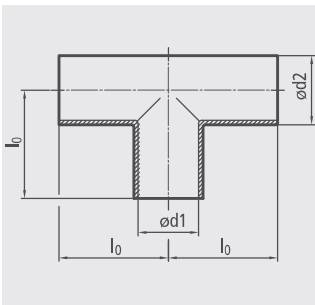
CODO 90° T/T  
BEND 90° N/N  
COUDE 90° E/E



DN	Ød1	Rd	I <sub>4</sub>	R	AISI 316L	kg
10	9	28x1/8"	39	26	T0220-3306010	-
15	15	34x1/8"	48	35	T0220-3306015	-
20	19	44x1/6"	53	40	T0220-3306020	-
25	25	52x1/6"	65	50	T0220-3306025	-
32	31	58x1/6"	70	55	T0220-3306032	-
40	37	65x1/6"	75	60	T0220-3306040	-
50	49	78x1/6"	86	70	T0220-3306050	-

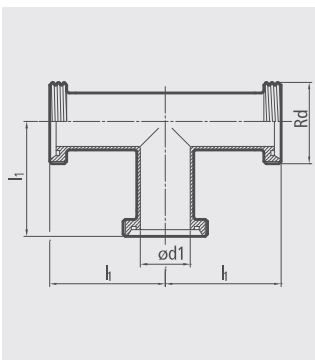
TE SOLDAR  
WELDING TEE  
TE A SOUDER

Según DIN 11852 (SERIE ANTIGUA)  
According to DIN 11852 (OLD SERIES)  
Selon DIN 11852 (OLD SERIES)



DN	Ød1	Ød2	I <sub>0</sub>	AISI 304	AISI 316L	kg
10	9	12	26	T0300-0004010	T0300-0006010	0,025
15	15	18	35	T0300-0004015	T0300-0006015	0,055
20	19	22	40	T0300-0004020	T0300-0006020	0,075
25	25	28	50	T0300-0004025	T0300-0006025	0,115
32	31	34	55	T0300-0004032	T0300-0006032	0,160
40	37	40	60	T0300-0004040	T0300-0006040	0,210
50	49	52	70	T0300-0004050	T0300-0006050	0,305

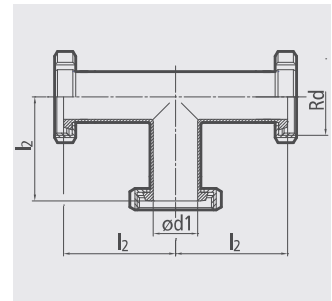
TE M/M/M  
TEE M/M/M  
TE F/F/F



DN	Ød1	Rd	I <sub>1</sub>	AISI 316L	kg
10	9	28x1/8"	43	T0300-1106010	-
15	15	34x1/8"	52	T0300-1106015	-
20	19	44x1/6"	59	T0300-1106020	-
25	25	52x1/6"	72	T0300-1106025	-
32	31	58x1/6"	77	T0300-1106032	-
40	37	65x1/6"	82	T0300-1106040	-
50	49	78x1/6"	93	T0300-1106050	-

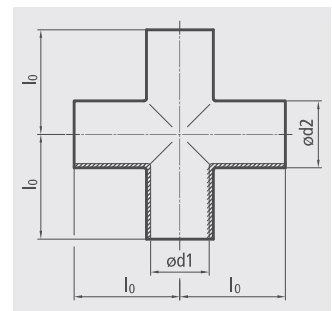
TE T/T/T  
TEE N/N/N  
TE F/F/F

DN	Ød1	Rd	$l_2$	AISI 316L	kg
10	9	28x1/8"	39	T0300-3306010	-
15	15	34x1/8"	48	T0300-3306015	-
20	19	44x1/6"	53	T0300-3306020	-
25	25	52x1/6"	65	T0300-3306025	-
32	31	58x1/6"	70	T0300-3306032	-
40	37	65x1/6"	75	T0300-3306040	-
50	49	78x1/6"	86	T0300-3306050	-



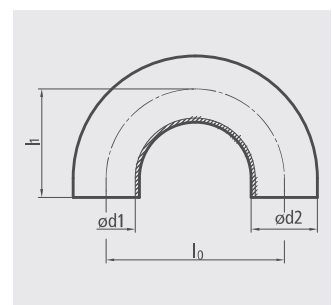
CRUZ SOLDAR  
WELDING CROSS  
CROIX A SOUDER

DN	Ød1	Ød2	$l_0$	AISI 316L	kg
10	9	12	26	T0400-0006010	-
15	15	18	35	T0400-0006015	-
20	19	22	40	T0400-0006020	-
25	25	28	50	T0400-0006025	-
32	31	34	55	T0400-0006032	-
40	37	40	60	T0400-0006040	0,282
50	49	52	70	T0400-0006050	0,417



CURVA 180° SOLDAR  
WELDING BEND 180°  
COUDE 180° SOUDER/DUDGEONNER

DN	Ød1	Ød2	$l_0$	$l_1$	AISI 304	AISI 316L	kg
10	9	12	52	26	T0230-0004010	T0230-0006010	-
15	15	18	68	34	T0230-0004015	T0230-0006015	-
20	19	22	76	38	T0230-0004020	T0230-0006020	-
25	25	28	100	50	T0230-0004025	T0230-0006025	0,141
32	31	34	110	55	T0230-0004032	T0230-0006032	-
40	37	40	120	60	T0230-0004040	T0230-0006040	0,243
50	49	52	140	70	T0230-0004050	T0230-0006050	-



# ACCESORIOS PARA TUBO DIN 11850 (SERIE 2)

## FITTINGS FOR DIN 11850 (SERIES 2) TUBE

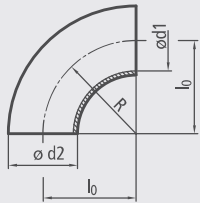
### ACCESSOIRES POUR TUBE DIN 11850 (SÉRIE 2)

8

#### DIN 11850 (SERIES 2)

CODO 90° SOLDAR  
WELDING BEND 90°  
COUDE 90° A SOUDER

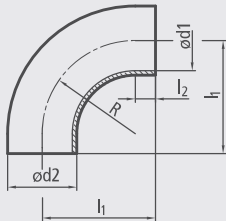
Según DIN 11852 (SERIE 2) Form BS-90  
According to DIN 11852 (SERIES 2) Form BS-90  
Selon DIN 11852 (SÉRIE 2) Form BS-90



DN	Ød1	Ød2	$l_0$	R	AISI 304	AISI 316L	kg
10	10	13	26	26	T0220-00030102	T0220-00060102	0,015
15	16	19	35	35	T0220-00030152	T0220-00060152	0,030
20	20	23	40	40	T0220-00030202	T0220-00060202	0,045
25	26	29	50	50	T0220-00030252	T0220-00060252	0,070
32	32	35	55	55	T0220-00030322	T0220-00060322	0,090
40	38	41	60	60	T0220-00030402	T0220-00060402	0,125
50	50	53	70	70	T0220-00030502	T0220-00060502	0,200
65	66	70	80	80	T0220-0004065	T0220-0006065	0,385
80	81	85	90	90	T0220-0004080	T0220-0006080	0,545
100	100	104	100	100	T0220-0004100	T0220-0006100	0,790
125	125	129	187,5	187,5	T0220-0004125	T0220-0006125	-
150	150	154	225	225	T0220-0004150	T0220-0006150	-
200	200	204	300	300	T0220-0004200	T0220-0006200	-

CODO 90° SOLDAR/MANDRINAR  
EXPANDING WELDING BEND 90°  
COUDE 90° A SOUDER/DUDGEONNER

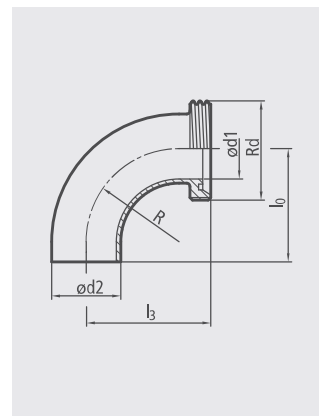
Según DIN 11852 (SERIE 2) Form BL-90  
According to DIN 11852 (SERIES 2) Form BL-90  
Selon DIN 11852 (SÉRIE 2) Form BL-90



DN	Ød1	Ød2	$l_1$	$l_2$	R	AISI 304	AISI 316L	kg
10	10	13	51	25	26	T0222-00030102	T0222-00060102	0,025
15	16	19	60	25	35	T0222-00030152	T0222-00060152	0,050
20	20	23	65	25	40	T0222-00030202	T0222-00060202	0,065
25	26	29	90	40	50	T0222-00030252	T0222-00060252	0,125
32	32	35	95	40	55	T0222-00030322	T0222-00060322	0,150
40	38	41	100	40	60	T0222-00030402	T0222-00060402	0,180
50	50	53	110	40	70	T0222-00030502	T0222-00060502	0,270
65	66	70	120	40	80	T0222-00030652	T0222-00060652	0,570
80	81	85	145	55	90	T0222-00030802	T0222-00060802	0,780
100	100	104	155	55	100	T0222-00031002	T0222-00061002	1,070
125	125	129	245	57,3	187,7	T0222-00031252	T0222-00061252	-

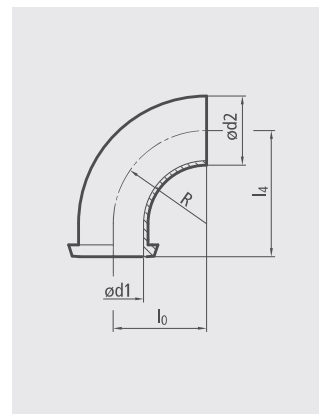
CODO 90° S/M  
BEND 90° W/M  
COUDE 90° S/M

DN	Ød1	Ød2	Rd	I <sub>0</sub>	I <sub>3</sub>	R	AISI 316L	kg
10	10	13	28x1/8"	26	43	26	T0220-01060102	-
15	16	19	34x1/8"	35	52	35	T0220-01060152	-
20	20	23	44x1/6"	40	59	40	T0220-01060202	-
25	26	29	52x1/6"	50	72	50	T0220-01060252	-
32	32	35	58x1/6"	55	77	55	T0220-01060322	-
40	38	41	65x1/6"	60	82	60	T0220-01060402	-
50	50	53	78x1/6"	70	93	70	T0220-01060502	-
65	66	70	95x1/6"	80	105	80	T0220-0106065	-
80	81	85	110x1/4"	90	115	90	T0220-0106080	-
100	100	104	130x1/4"	100	130	100	T0220-0106100	-



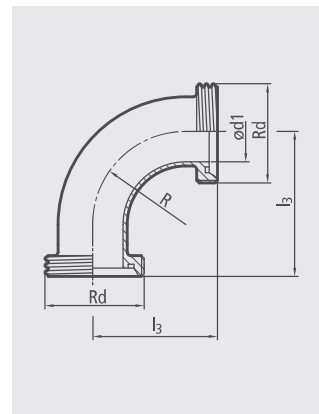
CODO 90° S/T  
BEND 90° W/N  
COUDE 90° S/E

DN	Ød1	Ød2	I <sub>0</sub>	I <sub>4</sub>	R	AISI 316L	kg
10	10	13	26	39	26	T0220-07060102	-
15	16	19	35	48	35	T0220-07060152	-
20	20	23	40	53	40	T0220-07060202	-
25	26	29	50	65	50	T0220-07060252	-
32	32	35	55	70	55	T0220-07060322	-
40	38	41	60	75	60	T0220-07060402	-
50	50	53	70	86	70	T0220-0706050	-
65	66	70	80	97	80	T0220-0706065	-
80	81	85	90	107	90	T0220-0706080	-
100	100	104	100	120	100	T0220-0706100	-

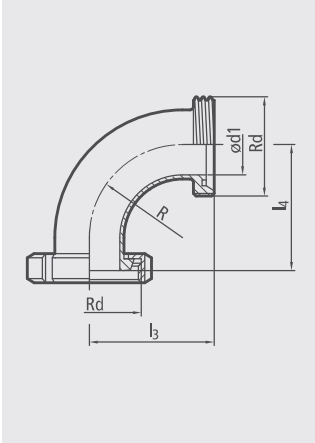


CODO 90° M/M  
BEND 90° M/M  
COUDE 90° M/M

DN	Ød1	Rd	I <sub>3</sub>	R	AISI 316L	kg
10	10	28x1/8"	43	26	T0220-11060102	-
15	16	34x1/8"	52	35	T0220-11060152	-
20	20	44x1/6"	59	40	T0220-11060202	-
25	26	52x1/6"	72	50	T0220-11060252	-
32	32	58x1/6"	77	55	T0220-11060322	-
40	38	65x1/6"	82	60	T0220-11060402	-
50	50	78x1/6"	93	70	T0220-11060502	-
65	66	95x1/6"	105	80	T0220-1106065	-
80	81	110x1/4"	115	90	T0220-1106080	-
100	100	130x1/4"	130	100	T0220-1106100	-

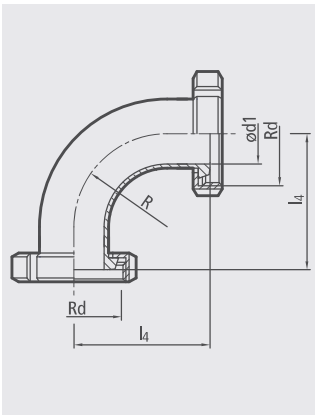


CODO 90° M/T  
BEND 90° M/N  
COUDE 90° M/E



DN	Ød1	Rd	I <sub>3</sub>	I <sub>4</sub>	R	AISI 316L	kg
10	10	28x1/8"	43	39	26	T0220-13060102	-
15	16	34x1/8"	52	48	35	T0220-13060152	-
20	20	44x1/6"	59	53	40	T0220-13060202	-
25	26	52x1/6"	72	65	50	T0220-13060252	-
32	32	58x1/6"	77	70	55	T0220-13060322	-
40	38	65x1/6"	82	75	60	T0220-13060402	-
50	50	78x1/6"	93	86	70	T0220-13060502	-
65	66	95x1/6"	105	97	80	T0220-1306065	-
80	81	110x1/4"	115	107	90	T0220-1306080	-
100	100	130x1/4"	130	120	100	T0220-1306100	-

CODO 90° T/T  
BEND 90° N/N  
COUDE 90° E/E

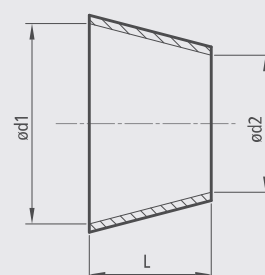


DN	Ød1	Rd	I <sub>4</sub>	R	AISI 316L	kg
10	10	28x1/8"	39	26	T0220-33060102	-
15	16	34x1/8"	48	35	T0220-33060152	-
20	20	44x1/6"	53	40	T0220-33060202	-
25	26	52x1/6"	65	50	T0220-33060252	-
32	32	58x1/6"	70	55	T0220-33060322	-
40	38	65x1/6"	75	60	T0220-33060402	-
50	50	78x1/6"	86	70	T0220-33060502	-
65	66	95x1/6"	97	80	T0220-3306065	-
80	81	110x1/4"	107	90	T0220-3306080	-
100	100	130x1/4"	120	100	T0220-3306100	-

REDUCCION CONCÉNTRICA SOLDAR  
 WELDING CONCENTRIC REDUCER  
 REDUCTION CONCENTRIQUE A SOUDER

Según DIN 11852 (SERIE 2) Form RK  
 According to DIN 11852 (SERIES 2) Form RK  
 Selon DIN 11852 (SÉRIE 2) Form RK

DN	Ød1	Ød2	L	AISI 316L	kg
15-10	16	10	11	T0501-0006015	0,006
20-15	20	16	7	T0501-0006020	0,010
25-15	26	16	18	T0502-0006025	0,024
25-20	26	20	11	T0501-0006025	0,025
32-20	32	20	22	T0502-0006032	0,035
32-25	32	26	11	T0501-0006032	0,037
40-20	38	20	33	T0503-0006040	0,045
40-25	38	26	22	T0502-0006040	0,040
40-32	38	32	11	T0501-0006040	0,045
50-25	50	26	44	T0503-0006050	0,074
50-32	50	32	33	T0502-0006050	0,078
50-40	50	38	22	T0501-0006050	0,040
65-32*	66	32	63	T0503-0006065	0,200
65-40	66	38	51	T0502-0006065	0,125
65-50	66	50	29	T0501-0006065	0,080
80-40*	81	38	80	T0503-0006080	0,225
80-50	81	50	56	T0502-0006080	-
80-65	81	66	27	T0501-0006080	-
100-50*	100	50	93	T0503-0006100	-
100-65	100	66	61	T0502-0006100	-
100-80	100	81	35	T0501-0006100	-

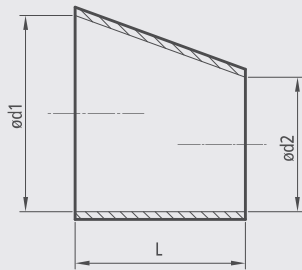


\* No estándar  
 Nonstandard  
 No standard



REDUCCION EXCÉNTRICA SOLDAR  
WELDING EXCENTRIC REDUCER  
REDUCTION EXCENTRIQUE A SOUDER

Según DIN 11852 (SERIE 2) Form RE  
According to DIN 11852 (SERIES 2) Form RE  
Selon DIN 11852 (SÉRIE 2) Form RE

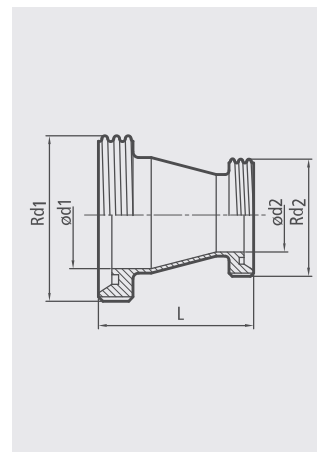


DN	Ød1	Ød2	L	AISI 316L	kg
15 -10	16	10	16,5	T0551-0006015	0,007
20-15	20	16	11	T0551-0006020	0,021
25-15	26	16	27,5	T0552-0006025	0,026
25-20	26	20	16,5	T0551-0006025	0,014
32-20	32	20	33	T0552-0006032	0,025
32-25	32	26	16,5	T0551-0006032	0,020
40-20*	38	20	49	T0553-0006040	0,043
40-25	38	26	33	T0552-0006040	0,031
40-32	38	32	16,5	T0551-0006040	0,026
50-25*	50	26	68	T0553-0006050	0,065
50-32*	50	32	50	T0552-0006050	0,057
50-40	50	38	33	T0551-0006050	0,066
65-32*	66	32	93,5	T0553-0006065	0,120
65-40*	66	38	77	T0552-0006065	0,150
65-50	66	50	44	T0551-0006065	0,145
80-40*	81	38	118	T0553-0006080	0,250
80-50*	81	50	85	T0552-0006080	0,220
80-65	81	66	41,2	T0551-0006080	0,105
100-50*	100	50	137	T0553-0006100	0,575
100-65*	100	66	93,5	T0552-0006100	0,180
100-80	100	81	52,5	T0551-0006100	0,163
125-100	125	100	68,5	T0551-0006125	-
150-100*	150	100	137	T0552-0006150	-
150-125	150	125	68,5	T0551-0006150	-

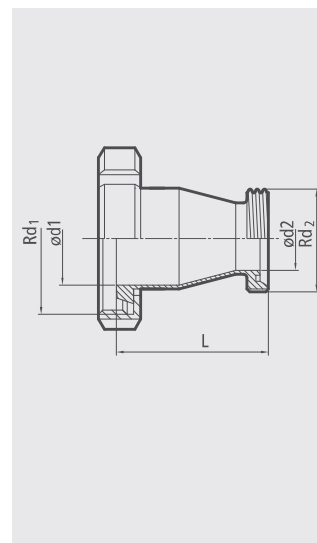
\* No estándar  
Nonstandard  
No standard

**REDUCCION CONCÉNTRICA M/M**  
**CONCENTRIC REDUCER M/M**  
**REDUCTION CONCENTRIQUE M/M**

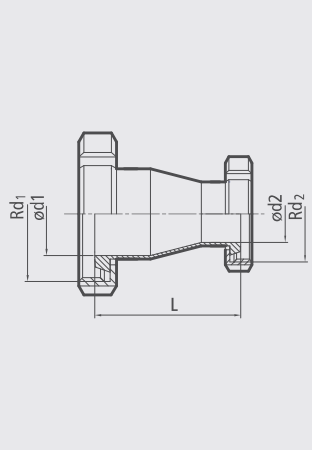
DN	Ød1	Ød2	Rd <sub>1</sub>	Rd <sub>2</sub>	L	AISI 316L	kg
32-25	32	26	58x1/6"	52x1/6"	55	T0501-1106032	-
40-25	38	26	65x1/6"	52x1/6"	66	T0502-1106040	-
40-32	38	32	65x1/6"	58x1/6"	55	T0501-1106040	-
50-32	50	32	78x1/6"	58x1/6"	78	T0502-1106050	-
50-40	50	38	78x1/6"	65x1/6"	67	T0501-1106050	-
65-40	66	38	95x1/6"	65x1/6"	98	T0502-1106065	-
65-50	66	50	95x1/6"	78x1/6"	77	T0501-1106065	-
80-50	81	50	110x1/4"	78x1/6"	104	T0502-1106080	-
80-65	81	66	110x1/4"	95x1/6"	77	T0501-1106080	-
100-65	100	66	130x1/4"	95x1/6"	116	T0502-1106100	-
100-80	100	81	130x1/4"	110x1/6"	90	T0501-1106100	-


**REDUCCION CONCÉNTRICA T/M**  
**CONCENTRIC REDUCER N/M**  
**REDUCTION CONCENTRIC M/F**

DN	Ød1	Ød2	Rd <sub>1</sub>	Rd <sub>2</sub>	L	AISI 316L	kg
32-25	32	26	58x1/6"	52x1/6"	48	T0501-3106032	-
40-25	38	26	65x1/6"	52x1/6"	59	T0502-3106040	-
40-32	38	32	65x1/6"	58x1/6"	48	T0501-3106040	-
50-32	50	32	78x1/6"	58x1/6"	71	T0502-3106050	-
50-40	50	38	78x1/6"	65x1/6"	60	T0501-3106050	-
65-40	66	38	95x1/6"	65x1/6"	90	T0502-3106065	-
65-50	66	50	95x1/6"	78x1/6"	69	T0501-3106065	-
80-50	81	50	110x1/4"	78x1/6"	96	T0502-3106080	-
80-65	81	66	110x1/4"	95x1/6"	69	T0501-3106080	-
100-65	100	66	130x1/4"	95x1/6"	106	T0502-3106100	-
100-80	100	81	130x1/4"	110x1/4"	80	T0501-3106100	-

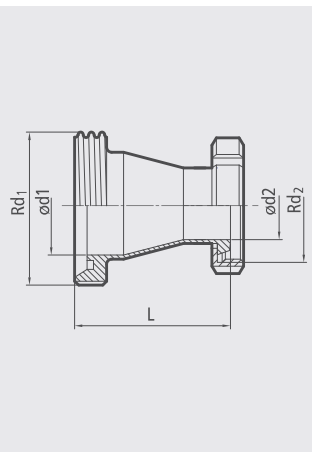


REDUCCION CONCENTRICA T/T  
CONCENTRIC REDUCER N/N  
REDUCTION CONCENTRIQUE F/F



DN	Ød1	Ød2	Rd <sub>1</sub>	Rd <sub>2</sub>	L	AISI 316L	kg
32-25	32	26	58x1/6"	52x1/6"	41	T0501-3306032	-
40-25	38	26	65x1/6"	52x1/6"	52	T0502-3306040	-
40-32	38	32	65x1/6"	58x1/6"	41	T0501-3306040	-
50-32	50	32	78x1/6"	58x1/6"	64	T0502-3306050	-
50-40	50	38	78x1/6"	65x1/6"	53	T0501-3306050	-
65-40	66	38	95x1/6"	65x1/6"	83	T0502-3306065	-
65-50	66	50	95x1/6"	78x1/6"	62	T0501-3306065	-
80-50	81	50	110x1/4"	78x1/6"	89	T0501-3306080	-
80-65	81	66	110x1/4"	95x1/6"	61	T0502-3306080	-
100-65	100	66	130x1/4"	95x1/6"	98	T0502-3306100	-
100-80	100	81	130x1/4"	110x1/4"	72	T0501-3306100	-

REDUCCION CONCENTRICA M/T  
CONCENTRIC REDUCER M/N  
REDUCTION CONCENTRIQUE M/F

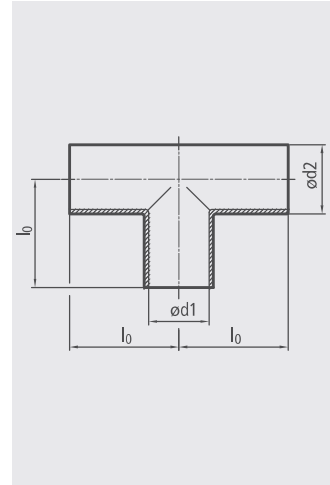


DN	Ød1	Ød2	Rd <sub>1</sub>	Rd <sub>2</sub>	L	AISI 316L	kg
32-25	32	26	58x1/6"	52x1/6"	48	T0501-1306032	-
40-25	38	26	65x1/6"	52x1/6"	59	T0502-1306040	-
40-32	38	32	65x1/6"	58x1/6"	48	T0501-1306040	-
50-32	50	32	78x1/6"	58x1/6"	71	T0502-1306050	-
50-40	50	38	78x1/6"	65x1/6"	60	T0501-1306050	-
65-40	66	38	95x1/6"	65x1/6"	91	T0502-1306065	-
65-50	66	50	95x1/6"	78x1/6"	70	T0501-1306065	-
80-50	81	50	110x1/4"	78x1/6"	97	T0502-1306080	-
80-65	81	66	110x1/4"	95x1/6"	69	T0501-1306080	-
100-65	100	66	130x1/4"	95x1/6"	108	T0502-1306100	-
100-80	100	81	130x1/4"	110x1/4"	82	T0501-1306100	-

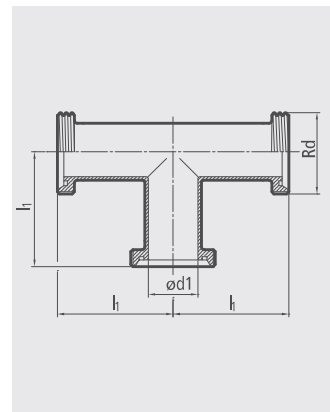
**TE SOLDAR  
WELDING TEE  
TE A SOUDER**

 Según DIN 11852 (SERIE 2) Form TS  
 According to DIN 11852 (SERIE 2) Form TS  
 Selon DIN 11852 (SÉRIE 2) Form TS

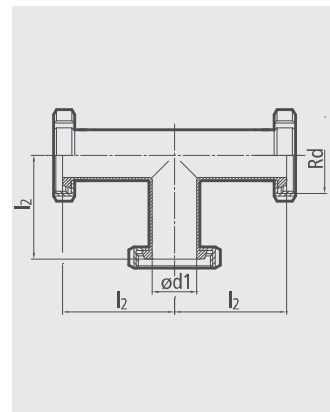
DN	Ød1	Ød2	l <sub>0</sub>	AISI 304	AISI 316L	kg
10	10	13	26	T0300-00030102	T0300-00060102	0,025
15	16	19	35	T0300-00030152	T0300-00060152	0,055
20	20	23	40	T0300-00030202	T0300-00060202	0,075
25	26	29	50	T0300-00030252	T0300-00060252	0,115
32	32	35	55	T0300-00030322	T0300-00060322	0,160
40	38	41	60	T0300-00030402	T0300-00060402	0,210
50	50	53	70	T0300-00030502	T0300-00060502	0,305
65	66	70	80	T0300-0004065	T0300-0006065	0,600
80	81	85	90	T0300-0004080	T0300-0006080	0,805
100	100	104	100	T0300-0004100	T0300-0006100	1,130
125	125	129	187,5	T0300-0004125	T0300-0006120	-
150	150	154	225	T0300-0004150	T0300-0006150	-


**TE M/M/M  
TEE M/M/M  
TE M/M/M**

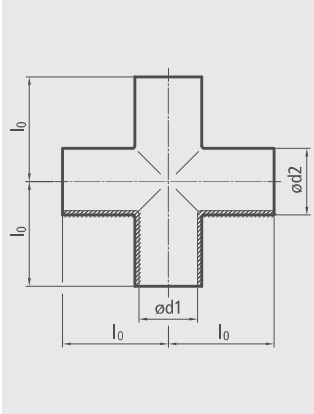
DN	Ød1	Rd	l <sub>1</sub>	AISI 316L	kg
10	10	28x1/8"	43	T0300-11060102	-
15	16	34x1/8"	52	T0300-11060152	-
20	20	44x1/6"	59	T0300-11060202	-
25	26	52x1/6"	72	T0300-11060252	-
32	32	58x1/6"	77	T0300-11060322	-
40	38	65x1/6"	82	T0300-11060402	-
50	50	78x1/6"	93	T0300-11060502	-
65	66	95x1/6"	105	T0300-1106065	-
80	81	110x1/4"	115	T0300-1106080	-
100	100	130x1/4"	130	T0300-1106100	-


**TE T/T/T  
TEE N/N/N  
TE F/F/F**

DN	Ød1	Rd	l <sub>2</sub>	AISI 316L	kg
10	10	28x1/8"	39	T0300-33060102	-
15	16	34x1/8"	48	T0300-33060152	-
20	20	44x1/6"	53	T0300-33060202	-
25	26	52x1/6"	65	T0300-33060252	-
32	32	58x1/6"	70	T0300-33060322	-
40	38	65x1/6"	75	T0300-33060402	-
50	50	78x1/6"	86	T0300-33060502	-
65	66	95x1/6"	97	T0300-3306065	-
80	81	110x1/4"	107	T0300-3306080	-
100	100	130x1/4"	120	T0300-3306100	-

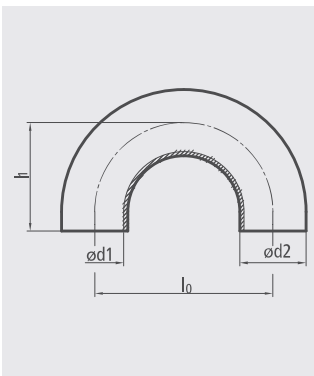


CRUZ SOLDAR  
WELDING CROSS  
CROIX A SOUDER



DN	Ød1	Ød2	$l_0$	AISI 316L	kg
10	10	13	26	T0400-00060102	-
15	16	19	35	T0400-00060152	-
20	20	23	40	T0400-00060202	-
25	26	29	50	T0400-00060252	-
32	32	35	55	T0400-00060322	-
40	38	41	60	T0400-00060402	0,282
50	50	53	70	T0400-00060502	0,417
65	66	70	80	T0400-0006065	0,706
80	81	85	90	T0400-0006080	---
100	100	104	100	T0400-0006100	1,245

CURVA 180° SOLDAR  
WELDING BEND 180°  
COUDE 180° SOUDER/DUDGEONNER



DN	Ød1	Ød2	$l_0$	$l_1$	AISI 304	AISI 316L	kg
10	10	13	52	26	---	T0230-00060102	-
15	16	19	70	35	---	T0230-00060152	-
20	20	23	80	40	---	T0230-00060202	-
25	26	29	100	50	T0230-00030252	T0230-00060252	0,141
32	32	35	110	55	T0230-00030322	T0230-00060322	0,210
40	38	41	120	60	T0230-00030402	T0230-00060402	0,243
50	50	53	140	70	T0230-00030502	T0230-00060502	-
65	66	70	160	80	T0230-0004065	T0230-0006065	-
80	81	85	180	90	T0230-0004080	T0230-0006080	-

Según DIN 11852 (SERIE 2) Form BS-180  
According to DIN 11852 (SERIES 2) Form BS-180  
Selon DIN 11852 (SÉRIE 2) Form BS-180